



**REGIONAL SPECIALISED METEOROLOGICAL CENTRE-TROPICAL CYCLONES, NEW DELHI
SPECIAL TROPICAL WEATHER OUTLOOK**

DEMS-RSMC TROPICAL CYCLONES NEW DELHI DATED 01.09.2024

SPECIAL TROPICAL WEATHER OUTLOOK FOR NORTH INDIAN OCEAN (THE BAY OF BENGAL AND THE ARABIAN SEA) VALID FOR NEXT 168 HOURS ISSUED AT 1530 UTC OF 01.09.2024 BASED ON 1200 UTC OF 01.09.2024.

SUB: (A) DEEP DEPRESSION (REMNANT OF CYCLONIC STORM “ASNA”) OVER NORTHWEST ARABIAN SEA AND (B) DEPRESSION OVER SOUTH CHHATTISGARH AND NEIGHBOURHOOD

(A) DEEP DEPRESSION (REMNANT OF CYCLONIC STORM “ASNA”) OVER NORTHWEST ARABIAN SEA

THE **CYCLONIC STORM “ASNA” (PRONOUNCED AS AS-NA)** OVER NORTHWEST ARABIAN SEA MOVED SOUTH-SOUTHWESTWARDS WITH A SPEED OF 10 KMPH DURING PAST 6 HOURS, WEAKENED INTO A DEEP DEPRESSION AND LAY CENTERED AT 1200 UTC OF TODAY, THE 01ST SEPTEMBER, 2024 OVER THE SAME REGION NEAR LATITUDE 22.2°N AND LONGITUDE 61.7°E, ABOUT 200 KM EAST OF RAS AL HADD (41270) AND 380 KM EAST-SOUTHEAST OF MUSCAT (41256).

IT IS LIKELY TO CONTINUE TO MOVE FURTHER SOUTH-SOUTHWESTWARDS OVER NORTHWEST ARABIAN SEA AND WEAKEN GRADUALLY INTO A DEPRESSION BY 0000 UTC OF 2ND SEPTEMBER OVER THE SAME REGION.

AS PER INSAT 3DR IMAGERY, AT 1200 UTC OF 01ST SEPTEMBER, INTENSITY OF THE SYSTEM IS CHARACTERISED AS T 2.0. THE CLOUD MASS SHOWS FURTHER DISORGANISATION. AREA OF INTENSE CONVECTION IS SEEN TO THE NORTHWEST PF SYSTEM AREA. SCATTERED TO BROKEN LOW AND MEDIUM CLOUDS WITH EMBEDDED INTENSE CONVECTION LAY OVER NORTHWEST AND SOUTHEAST ARABIAN SEA, (MINIMUM CLOUD TOP TEMPERATURE IS MINUS 70°C). MODERATE TO INTENSE CONVECTION LAY OVER SOUTHEAST IRAN, ADJOINING SOUTH PAKISTAN, GULF OF OMAN AND NORTH OMAN.

ASSOCIATED MAXIMUM SUSTAINED WIND SPEED IS 30 KTS GUSTING TO 40 KTS. ESTIMATED CENTRAL PRESSURE (MSLP) IS 996 HPA.

FORECAST TRACK AND INTENSITY ARE GIVEN IN THE FOLLOWING TABLE:

DATE/TIME (UTC)	POSITION (LAT. °N/ LONG. °E)	MAXIMUM SUSTAINED SURFACE WIND SPEED (KMPH)	CATEGORY OF CYCLONIC DISTURBANCE
01.09.24/1200	22.2/61.7	50-60 GUSTING TO 70	DEEP DEPRESSION
01.09.24/1800	21.7/61.4	40-50 GUSTING TO 60	DEPRESSION
02.09.24/0000	21.2/61.1	35-45 GUSTING TO 55	DEPRESSION

Cloud distribution: (a) Isolated: <25%, Scattered:25-50%, Broken: 51-75%, Solid:>75%, Convection Intensity: (a) Weak: Cloud Top Temperature (CTT) >-25°C, (b) Moderate: CTT: - 25°C to -40°C, (c) Intense: CTT: - 41°C to -70°C and (d) Very Intense: : Less than -70°C
PROBABILITY OF CYCLOGENESIS (FORMATION OF DEPRESSION):NIL: 0%, LOW: 1-33%, , MODERATE: 34-66% AND HIGH: 67-100%
This is a guidance Bulletin for WMO/ESCAP Panel Member countries. Visit respective National websites for Country specific Bulletins

WARNINGS:

SEA CONDITION AND ADVISORY FOR FISHERMEN IN ASSOCIATION WITH DEEP DEPRESSION (REMNANT OF CYCLONIC STORM ASNA) OVER NORTHWEST ARABIAN SEA:

WIND WARNING:

- SQUALLY WIND SPEED REACHING 50-60 KMPH GUSTING TO 70 KMPH IS PREVAILING OVER NORTHWEST ARABIAN SEA AND LIKE TO BECOME 40-50 KMPH GUSTING TO 60 KMPH BY 0000 UTC OF 2ND SEPTEMBER AND DECREASE THEREAFTER.
- SQUALLY WIND SPEED REACHING 40-50 KMPH GUSTING TO 60 KMPH IS LIKELY TO PREVAIL OVER CENTRAL ARABIAN SEA TILL 0000 UTC OF 2ND SEPTEMBER AND IMPROVE GRADUALLY THEREAFTER.
- STRONG WIND SPEED REACHING 30-40 KMPH GUSTING TO 50 KMPH IS LIKELY ALONG AND OFF GUJARAT, MAHARASHTRA AND KARNATAKA COAST TILL 0000 UTC OF 2ND SEPTEMBER.

SEA CONDITION:

- VERY ROUGH TO ROUGH SEA CONDITION IS LIKELY TO PREVAIL OVER NORTHWEST ARABIAN SEA TILL 0000 UTC OF 2ND SEPTEMBER AND WOULD IMPROVE THEREAFTER.
- ROUGH SEA CONDITION IS LIKELY OVER ADJOINING WESTCENTRAL ARABIAN SEA TILL 2ND SEPTEMBER.

FISHERMEN WARNING:

FISHERMEN ARE ADVISED NOT VENTURE INTO NORTHWEST ARABIAN SEA AND ADJOINING WESTCENTRAL ARABIAN SEA TILL 2ND SEPTEMBER.

(B) DEPRESSION OVER SOUTH CHHATTISGARH AND NEIGHBOURHOOD

THE DEPRESSION OVER SOUTH CHHATTISGARH AND ADJOINING SOUTH ODISHA MOVED WEST-NORTHWESTWARDS WITH A SPEED OF 17 KMPH DURING THE PAST 6 HOURS AND LAY CENTERED AT 1200 UTC OF TODAY, THE 01ST SEPTEMBER, 2024 OVER SOUTH CHHATTISGARH AND NEIGHBOURHOOD NEAR LATITUDE 19.0°N AND LONGITUDE 81.2°E, ABOUT 90 KM WEST OF JAGDALPUR (CHHATTISGARH), 190 KM EAST OF RAMAGUNDAM (TELANGANA), 230 KM SOUTHEAST OF BRAMHAPURI (MAHARASHTRA) AND 230 KM EAST-SOUTHEAST OF CHANDRAPUR (MAHARASHTRA).

IT IS LIKELY TO MOVE NEARLY NORTHWESTWARDS ACROSS SOUTH CHHATTISGARH & VIDARBHA AND WEAKEN INTO A WELL MARKED LOW PRESSURE AREA DURING NEXT 12 HOURS.

ASSOCIATED BROKEN LOW AND MEDIUM CLOUDS WITH EMBEDDED INTENSE TO VERY INTENSE CONVECTION LAY OVER SOUTH CHHATTISGARH, TELANGANA, NORTH INTERIOR KARNATAKA, MAHARASHTRA. MINIMUM CTT IS MINUS 93 DEG CELSIUS.

ASSOCIATED MAXIMUM SUSTAINED WIND SPEED IS 20 KTS GUSTING TO 30 KTS. ESTIMATED CENTRAL PRESSURE IS 996 HPA. AT 1200 UTC, CHANDRAPUR (VIDARBHA) REPORTED MEAN SEA LEVEL PRESSURE (MSLP) OF 997.4 HPA, AND 24 HOURS PRESSURE CHANGE (P24) OF -2.6 HPA. BRAHMAPURI (VIDARBHA) REPORTED MSLP OF 996.4 HPA, AND P24 OF -1.1 HPA.

SEA CONDITION AND ADVISORY FOR FISHERMEN FOR BAY OF BENGAL

SEA CONDITION:

- ROUGH SEA CONDITION IS VERY LIKELY TO PREVAIL OVER WESTCENTRAL AND ADJOINING NORTHWEST BAY OF BENGAL ALONG & OFF NORTH ANDHRA PRADESH & SOUTH ODISHA COASTS DURING NEXT 12 HOURS.

FISHERMEN WARNING:

FISHERMEN ARE ADVISED NOT TO VENTURE INTO

- WESTCENTRAL & ADJOINING NORTHWEST BAY OF BENGAL ALONG & OFF SOUTH ODISHA AND NORTH ANDHRA PRADESH COASTS ON 1ST SEPTEMBER.

REMARKS:

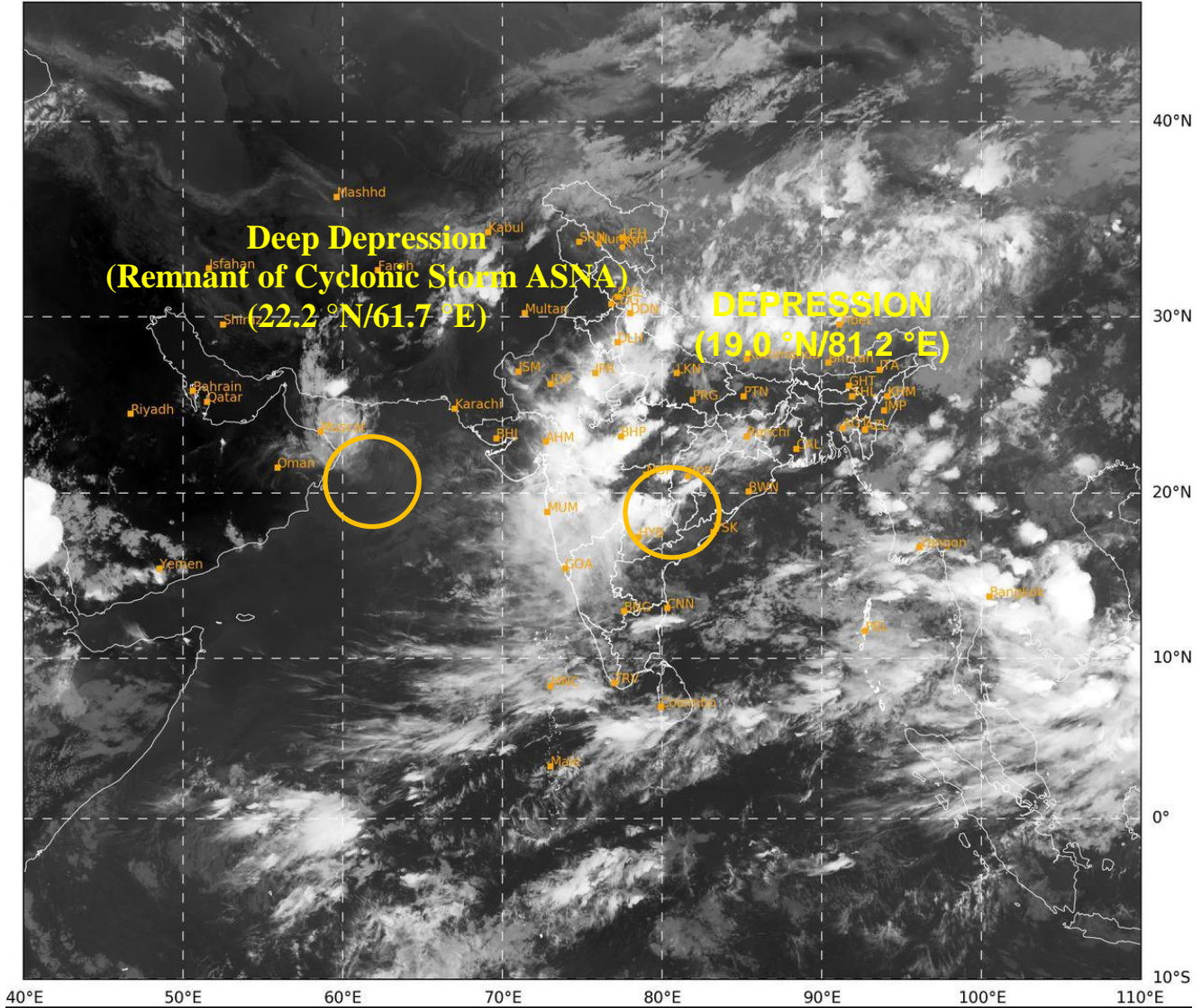
SEA SURFACE TEMPERATURE IS 28-29°C OVER WESTCENTRAL ARABIAN SEA AND IS LIKELY TO DECREASE ALONG THE FORECAST PATH OF SYSTEM. THE TROPICAL CYCLONE HEAT POTENTIAL IS LESS THAN 50 KJ/CM² OVER NORTHWEST AS. THE LOW LEVEL VORTICITY IS AROUND 100X10⁻⁵ S⁻¹ TO THE SOUTH OF THE SYSTEM AREA. LOW LEVEL CONVERGENCE IS 10X10⁻⁵ S⁻¹ TO THE SOUTHEAST OF THE SYSTEM CENTRE AND UPPER LEVEL DIVERGENCE IS ALSO 10X10⁻⁵ S⁻¹ TO THE NORTHWEST OF THE SYSTEM CENTRE. WIND SHEAR IS LOW TO MODERATE TO HIGH (20-25 KT) OVER SYSTEM AREA AND IS LIKELY TO BECOME HIGH OVER THE FORECAST PATH OF SYSTEM. THE NORTHEASTERLY WINDS IN THE UPPER LEVELS OVER SYSTEM AREA ARE STEERING THE SYSTEM SOUTHWESTWARDS.

IN ASSOCIATION WITH THE DEPRESSION OVER SOUTH ODISHA AND ADJOINING SOUTH CHHATTISGARH & NORTH ANDHRA PRADESH, THE LOW LEVEL VORTICITY IS POSITIVE AND IS AROUND 80-100X10⁻⁵ S⁻¹ OVER COASTAL ANDHRA PRADESH WITH EXTENSION UPTO MID TROPOSPHERIC LEVELS. LOW LEVEL CONVERGENCE IS 20X10⁻⁵ S⁻¹ AND IS NORTHEAST-SOUTHWEST ORIENTED AND UPPER LEVEL DIVERGENCE IS 20X10⁻⁵ S⁻¹ AND IS NORTH-SOUTH ORIENTED. WIND SHEAR IS HIGH OVER THE SYSTEM AREA.

CONSIDERING ALL THE ABOVE, IT IS INFERRED THAT:

- (1) DEEP DEPRESSION OVER NORTHWEST ARABIAN SEA IS LIKELY TO MOVE FURTHER SOUTH-SOUTHWESTWARDS OVER NORTHWEST ARABIAN SEA AND WEAKEN GRADUALLY INTO A DEPRESSION BY 0000 UTC OF 2ND SEPTEMBER OVER THE SAME REGION.
- (2) THE DEPRESSION OVER SOUTH CHHATTISGARH AND NEIGHBOURHOOD IS LIKELY TO MOVE NEARLY NORTHWESTWARDS ACROSS SOUTH CHHATTISGARH & VIDARBHA AND WEAKEN INTO A WELL MARKED LOW PRESSURE AREA DURING NEXT 12 HOURS.

(M SHARMA)
SCIENTIST-D
RSMC NEW DELHI



417

952

IMD,DELHI



OBSERVED AND FORECAST TRACK OF DEPRESSION OVER SOUTH CHHATTISGARH AND NEIGHBOURHOOD BASED ON 1200 UTC (1730 IST) OF 1ST SEPTEMBER, 2024.



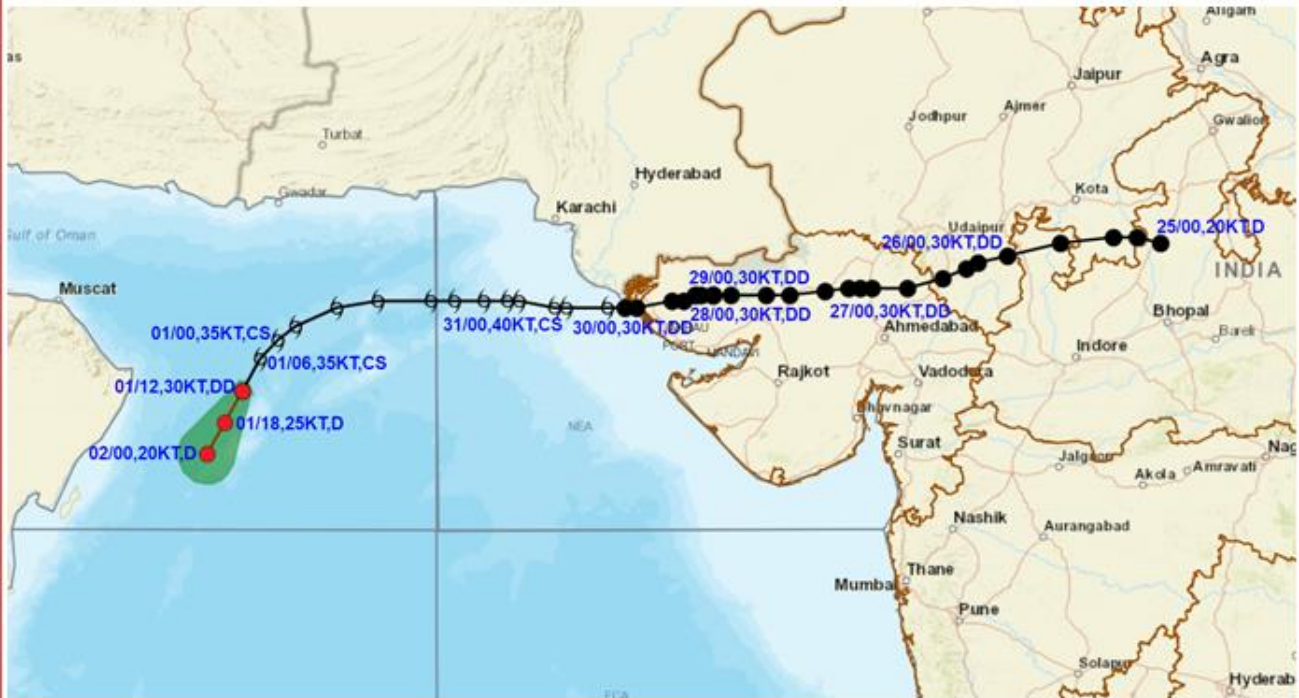
DATE/TIME IN UTC
 IST=UTC + 0530
 L: LOW PRESSURE AREA
 WML: WELL MARKED LOW PRESSURE AREA
 D: DEPRESSION (17-27 KT)
 DD: DEEP DEPRESSION (28-33 KT)
 CS: CYCLONIC STORM (34-47 KT)
 SCS: SEVERE CYCLONIC STORM (48-63KT)
 VSCS: VERY SEVERE CYCLONIC STORM (64-89 KT)
 ESCS: EXTREMELY SEVERE CYCLONIC STORM (90-119 KT)
 SuCS: SUPER CYCLONIC STORM (≥20 KT)

● LESS THAN 34 KT
 ○ 34-47 KT
 ○ ≥ 48 KT
 — OBSERVED TRACK
 — FORECAST TRACK
 ▲ CONE OF UNCERTAINTY

WCB: WESTCENTRAL BAY OF BENGAL
 ECB: EASTCENTRAL BAY OF BENGAL
 NWB: NORTHWEST BAY OF BENGAL



OBSERVED AND FORECAST TRACK OF DEEP DEPRESSION (REMNANT OF ASNA) ALONGWITH CONE OF UNCERTAINTY OVER NORTHWEST ARABIAN SEA BASED ON 1200 UTC (1730 IST) OF 1st SEPTEMBER, 2024.

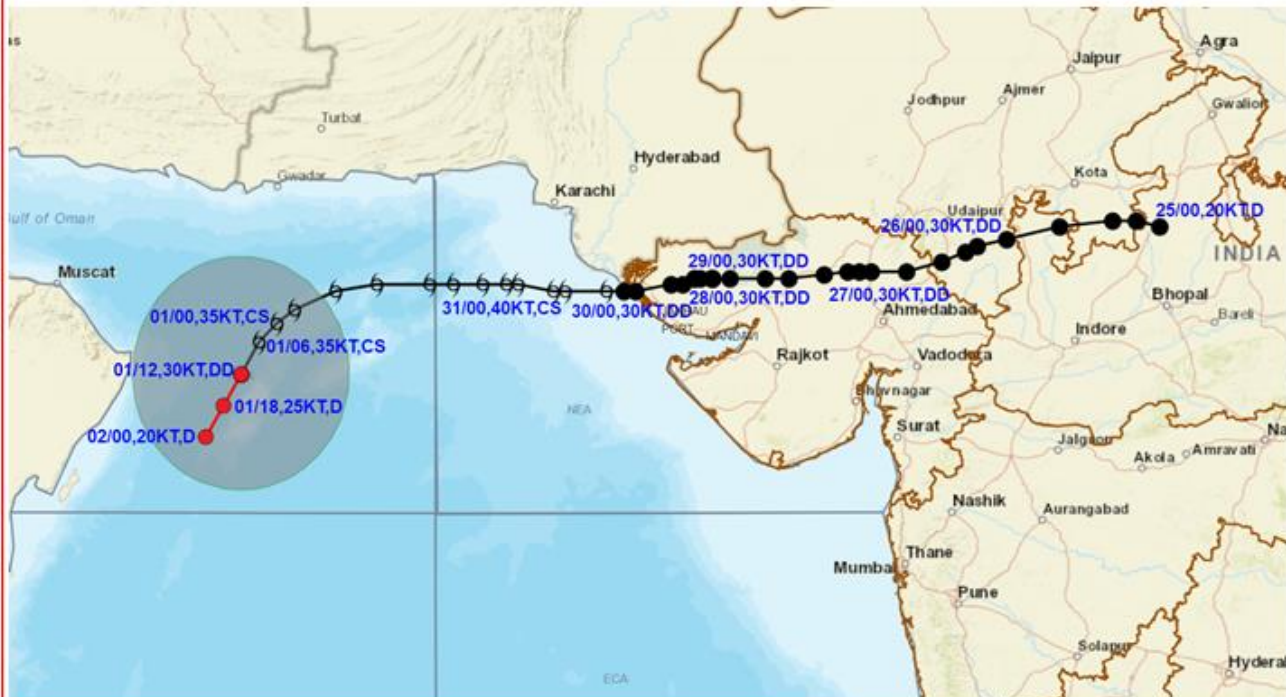


DATE/TIME IN UTC
 IST=UTC + 0530
 L: LOW PRESSURE AREA
 WML: WELL MARKED LOW PRESSURE AREA
 D: DEPRESSION (17-27 KT)
 DD: DEEP DEPRESSION (28-33 KT)
 CS: CYCLONIC STORM (34-47 KT)
 SCS: SEVERE CYCLONIC STORM (48-63KT)
 VSCS: VERY SEVERE CYCLONIC STORM (64-89 KT)
 ESCS: EXTREMELY SEVERE CYCLONIC STORM (90-119 KT)
 SuCS: SUPER CYCLONIC STORM (≥ 120 KT)

- LESS THAN 34 KT
- 34-47 KT
- ≥ 48 KT
- OBSERVED TRACK
- FORECAST TRACK
- CONE OF UNCERTAINTY



OBSERVED AND FORECAST TRACK OF DEEP DEPRESSION (REMNANT OF ASNA) ALONGWITH QUADRANT WIND DISTRIBUTION OVER NORTHWEST ARABIAN SEA BASED ON 1200 UTC (1730 IST) OF 1st SEPTEMBER, 2024.



DATE/TIME IN UTC
IST=UTC + 0530

L: LOW PRESSURE AREA
WML: WELL MARKED LOW PRESSURE AREA
D: DEPRESSION (17-27 KT)
DD: DEEP DEPRESSION (28-33 KT)
CS: CYCLONIC STORM (34-47 KT)
SCS: SEVERE CYCLONIC STORM (48-63KT)
VSCS: VERY SEVERE CYCLONIC STORM (64-89 KT)
ESCS: EXTREMELY SEVERE CYCLONIC STORM (90-119 KT)
SuCS: SUPER CYCLONIC STORM (≥ 120 KT)

● LESS THAN 34 KT
⊖ 34-47 KT
⊙ ≥ 48 KT
— OBSERVED TRACK
— FORECAST TRACK
— CONE OF UNCERTAINTY
AREA OF MAXIMUM SUSTAINED WIND SPEED:
28-33 KT (52-61 KMPH)
34-49 KT (62-91 KMPH)
50-63 KT (92-117 KMPH)
≥ 64 KT (≥118 KMPH)

IMPACT OVER THE SEA

MSW (knot/kmph)	Impact	Action
28-33 (52-61)	Very rough seas	Total suspension of fishing operations
34-49 (62-91)	High to very high seas	Total suspension of fishing operations
50-63 (92-117)	Very high seas	Total suspension of fishing operations
≥ 64 (≥118)	Phenomenal	Total suspension of fishing operations

Fishermen Warning Graphics

